

WALTER P MOORE

March 8, 2019

STRATEGIES TO INVOLVE THE PUBLIC IN TRAFFIC AND MOBILITY PROJECTS





ROBERT MOSES



JANE JACOBS





CROSS MANHATTAN ARTERIALS AND RELATED IMPROVEMENTS

LOWER MANHATTAN EXPRESSWAY
MID MANHATTAN EXPRESSWAY

DOWNTOWN REDEVELOPMENT
THE CENTRAL CITY
POST OFFICE
THE NEW EAST SIDE

Looking over rising roofs
of Lower Manhattan
Expressway from Hudson
River to East River

WALTER P MOORE



Our Love For The Public



WALTER P MOORE

Why Do We Have to Suffer Through Public Meetings



WALTER P MOORE



Irving City Council



WALTER P MOORE



WALTER P MOORE

SH 105 Access Management Study



WALTER P MOORE



You're Invited!

SH 105 PUBLIC MEETING

**SH 105
Public Meeting
Tuesday, May 24, 2016
5:30 - 8:00 p.m.**

**Conroe High School,
9th Grade Campus Cafeteria
400 Sgt Ed Holcomb Blvd N.
Conroe, TX 77304**



The Texas Department of Transportation (TxDOT) will hold a public meeting to discuss proposed access improvements to State Highway (SH) 105, from I-45 to FM 2854 in Montgomery County. The SH 105 Access Management study effort will identify short-, medium-, and long-range improvements aimed at reducing crashes, improving mobility, and supporting existing and future development given the rapid growth in this area. The purpose of Access Management is to provide vehicular access to land development in a manner that preserves the safety and efficiency of the transportation system. The public is encouraged to attend and provide feedback about the study. The Public Meeting will be presented in a come-and-go open house style format. There will be no formal presentation.

WALTER P MOORE

Begin forwarded message:

From: "Helen Payne" <helen@sppellc.com>

To: "Helen Payne" <helen@sppellc.com>

Subject: HOAWF- IMPORTANT REMINDER-TxDOT Public Meeting Regarding 105 Access Improvements: Scheduled for Tuesday, May 24th, 2016 5:30-8:00pm Located at the Conroe High School, 9th grade campus, cafeteria, located at 400 Sgt Ed Holcomb Blvd. N. Conroe, TX, 7730

Greetings to all Members of West Fork,

Important reminder that tomorrow night TxDot is holding a public meeting from 5:30-8:00pm Tuesday, May 24th, 2016 at Conroe High School, 9th grade campus, cafeteria, located at 400 Sgt Ed Holcomb Blvd. N. Conroe, TX, 77304. TxDOT will be presenting a study on potential access improvements to State HWY 105 from I-45 to FM 2854 in Montgomery County. As we shared last week one of the proposed improvements up for consideration is a direct access from FM 2854, through the community of McDade, interconnecting with West Fork Blvd to HWY 105.

We would like to take this time to personally extend our appreciation to the Blackburn's of Section 3 and any others who personally volunteered by going door to door handing out the public meeting notices to each owner in West Fork Sections 1, 2, and 3. The Board of Directors would also like to thank all members in advance for showing your Community support by working together and attending the meeting as this could have a direct impact on all our residents who have invested in our beautiful neighborhood.

Very Sincerely,

Helen Payne

Management

Stanley & Payne Property Executives, LLC.

2251 N. Loop 336W Ste. C, Conroe, TX 77304

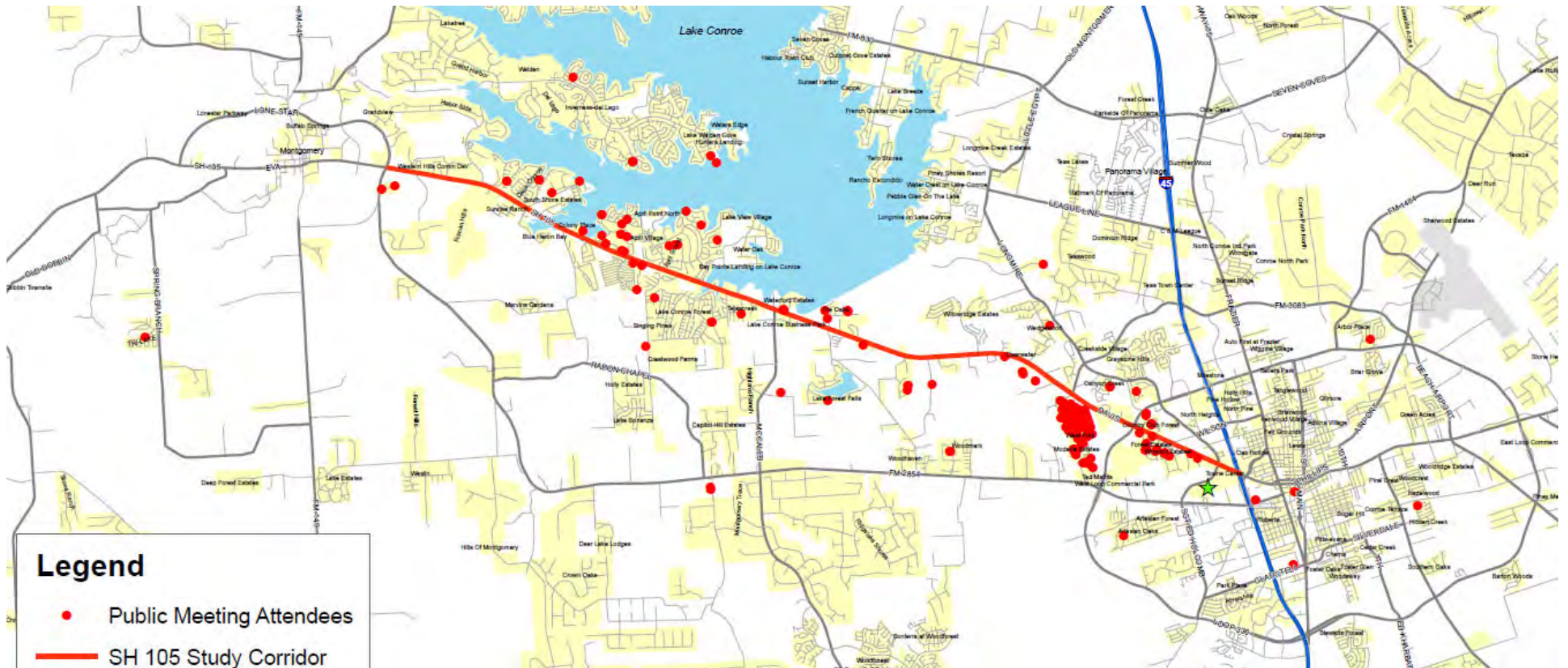
p 936-521-6900 f 936-521-6901

WALTER P MOORE



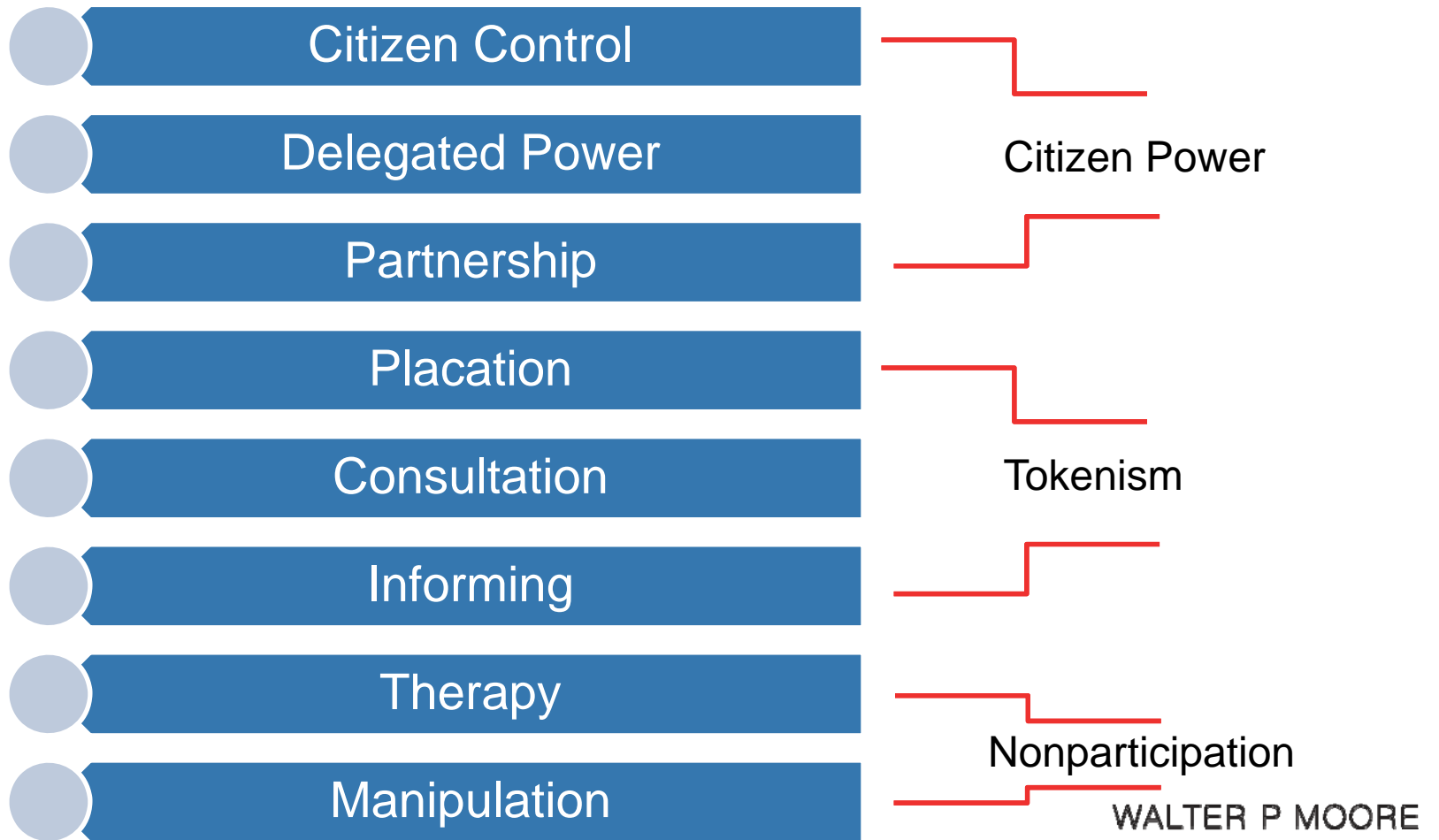
Circled in Black connects FM 2854 → McPade →
West Fork → Hwy 105 ...

WALTER P MOORE



WALTER P MOORE

Sherry Arnstein's Ladder of Citizen Participation

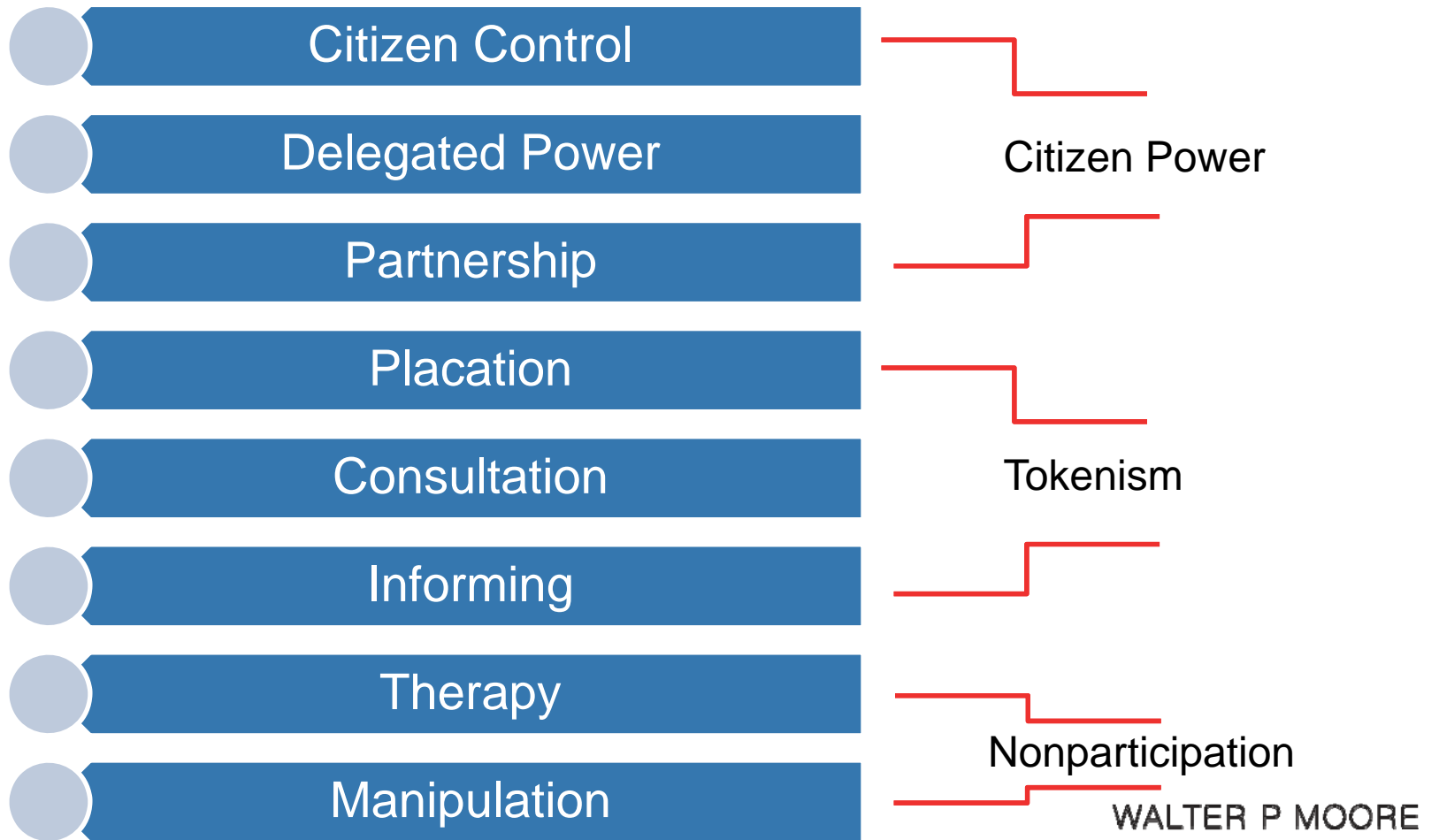


The Public is Smart

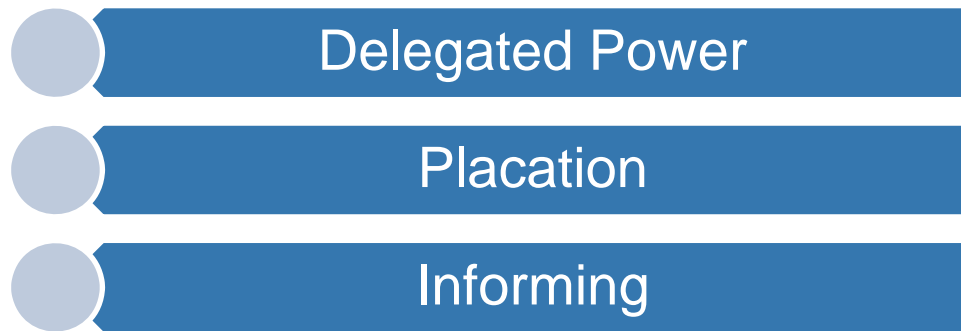


WALTER P MOORE

Sherry Arnstein's Ladder of Citizen Participation



Sherry Arnstein's Ladder of Citizen Participation



WALTER P MOORE

Informing



WALTER P MOORE

Placation



WALTER P MOORE

Delegated Power



WALTER P MOORE

Denton Case Study



WALTER P MOORE

Denton Case Study



WALTER P MOORE

Why Involve the Public?



WALTER P MOORE

Changing Demographics and Technology



WALTER P MOORE

Changing Demographics and Technology



“When I started in this game, I just told players what to do”

WALTER P MOORE

Changing Demographics and Technology



“Then you had to tell them how to do it”

WALTER P MOORE

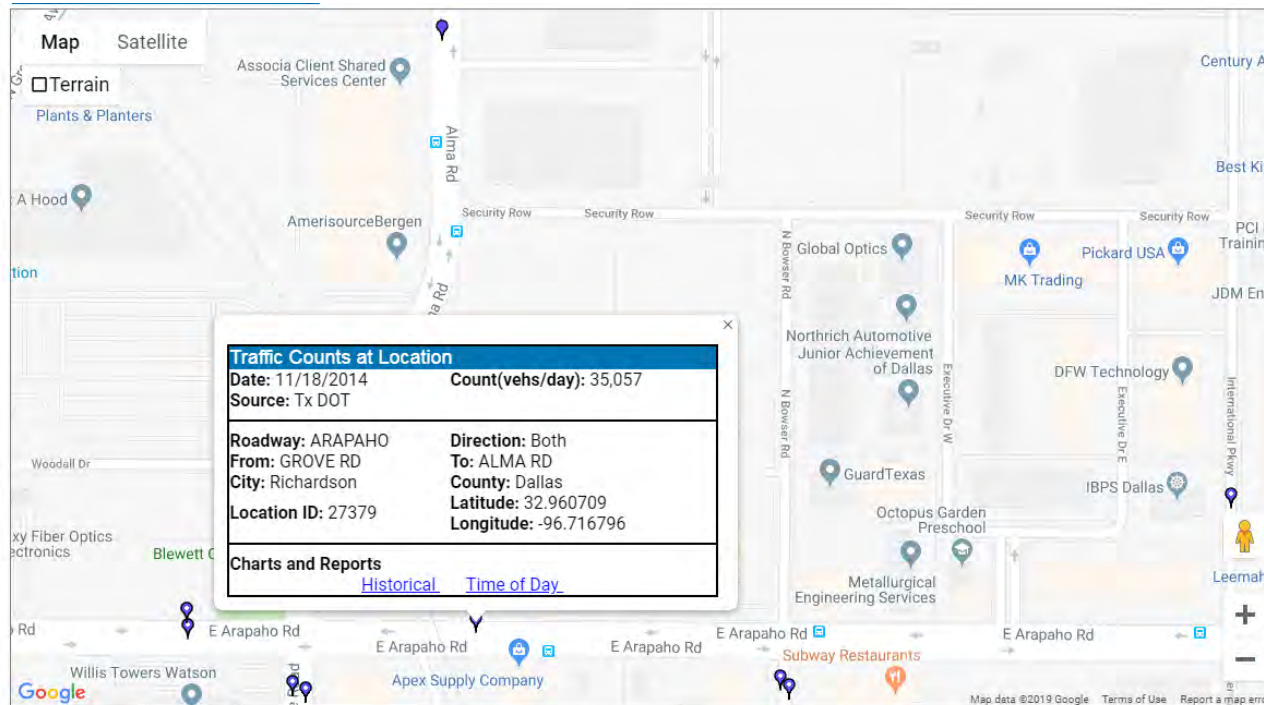
Changing Demographics and Technology



“Now you have to tell them why to do it, what’s in it for them”

WALTER P MOORE

Access to Information



WALTER P MOORE

How the Public Can Help in Project Success



WALTER P MOORE

AUSTIN STRATEGIC MOBILITY PLAN



Austin Strategic Mobility Plan



Source: City of Austin/Kimley-Horn

WALTER P MOORE

Austin Strategic Mobility Plan

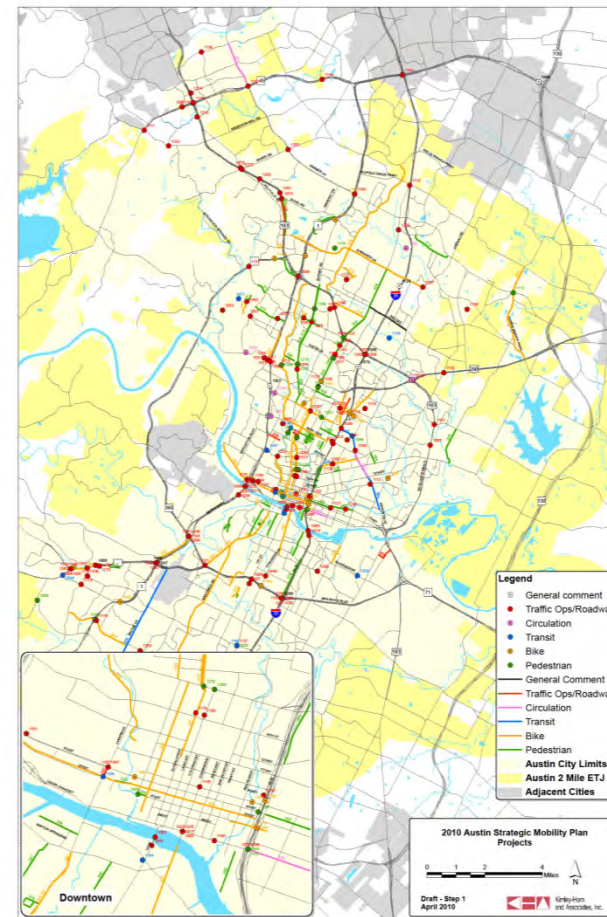


Austin Strategic Mobility Plan

Objectives & Outcomes

Goals: Sustainability Livability Mobility

Sustainable Growth		<p>Growth should be focused along established corridors and concentrated within the Austin city limits.</p> <p>An efficient, multimodal integrated transportation network should encourage sustainable growth.</p>
Transportation Choices		<p>Austinites should have multiple options for getting to work, school, shopping and recreation.</p> <p>Austin's systems should improve connections between walking, biking, transit and driving.</p>
Investment & Economic Development		<p>The transportation system should support job creation, investment, and enhancing the city's tax base.</p> <p>New transportation investments should be leveraged to attract additional public funding as well as new private development and redevelopment.</p>
Safety		<p>Austin's transportation system should be and feel as safe as possible for the community to be as livable as possible.</p> <p>Investments should be made to make travel safer for drivers, cyclists, and pedestrians.</p>
Efficiency		<p>The value of individual transportation investments should be maximized by linking systems into a network.</p> <p>Investments should include not just added capacity but also technologies and management strategies that make the network more efficient.</p>
Neighborhood Coordination		<p>Austin's transportation system should support the goals and objectives of adopted neighborhood plans.</p> <p>Pedestrian and bicycle system links should encourage neighborhood connectivity.</p>
Environmental Stewardship		<p>The transportation network should be designed to protect air and water quality, manage stormwater runoff and preserve green space.</p> <p>Investments should protect the environment and reduce Austin's carbon footprint by providing alternatives to driving, reducing travel times and connecting activity centers.</p>
Regional Integration		<p>Austin's roads, rail and trails should connect with and support a comprehensive regional transportation network.</p> <p>Regional and local corridors should integrate the various transportation systems that connect Central Texas activity centers.</p>
Other		



Source: City of Austin/Kimley-Horn

WALTER P MOORE

Priorities – the Austin Way

Objectives Ranking				
	Online Survey	Public Forums	Project Team	Ranked Average
Efficiency	20.1	12.7	9.6	14.1
Environmental Stewardship	10.7	9.2	14.0	11.3
Investment & Economic Development				
Mobility Choices	11.5	9.3	10.1	10.3
Neighborhood Coordination and Connectivity	12.9	19.8	21.7	18.1
Neighborhood Coordination and Connectivity	7.3	7.3	7.6	7.4
Regional Integration	18.2	14.5	11.5	14.7
Safety	7.9	11.1	7.3	8.7
Sustainable Growth	11.5	16.1	18.3	15.3
	100	100	100	100




Objectives & Outcomes

Austin Strategic Mobility Plan

Goals: Sustainability Livability Mobility


Sustainable Growth



Growth should be focused along established corridors and concentrated within the Austin city limits.

An efficient, multimodal integrated transportation network should encourage sustainable growth.

Transportation Choices



Austinites should have multiple options for getting to work, school, shopping and recreation.

Austin's system should improve connections between walking, biking, transit and driving.

Investment & Economic Development



The transportation system should support job creation, investment, and enhancing the city's tax base.

New transportation investments should be leveraged to attract additional public funding as well as new private development and redevelopment.


Safety



Austin's transportation system should be and feel as safe as possible for the community to be as livable as possible.

Investments should be made to make travel safer for drivers, cyclists, and pedestrians.

Efficiency



The value of individual transportation investments should be maximized by linking systems into a network.

Investments should include not just added capacity but also technologies and management strategies that make the network more efficient.

Neighborhood Coordination



Austin's transportation system should support the goals and objectives of adopted neighborhood plans.

Pedestrian and bicycle system links should encourage neighborhood connectivity.

Environmental Stewardship



The transportation network should be designed to protect air and water quality, manage stormwater runoff and preserve green space.

Investments should protect the environment and reduce Austin's carbon footprint by providing alternatives to driving, reducing travel times and connecting activity centers.

Regional Integration



Austin's roads, rail and trails should connect with and support a comprehensive regional transportation network.

Regional and local corridors should integrate the various transportation systems that connect Central Texas activity centers.

Other

Source: City of Austin/Kimley-Horn
WALTER P MOORE

55% FOR - 45% AGAINST



SOUTHEAST HOUSTON MOBILITY PLAN



Rendering: Asakura Robinson

Southeast Houston Mobility Plan



WALTER P MOORE

Southeast Houston Mobility Plan

GOAL	SCORE
CONNECTIONS	66
SAFETY	63
HEALTH	52
RESILIENCE	46
CHOICES	41
PARTNERSHIPS	29
REGIONAL ACCESS	27

Responses were counted and scored with a composite score and aggregated in the following way:

- Low = 1 point
- Medium = 2 points
- High = 3 points
- Very high = 4 points

The highest ranked goals include neighborhood connections, safety, and health. People’s additional write ins included recommendations to add a METRO shuttle to nearby transit centers, trash cleanup, more tree-lined streets, lighting, and sidewalk repairs.

WALTER P MOORE

PUBLIC INVOLVEMENT STRATEGIES



Open House



WALTER P MOORE

Open House

→ Avoid having open question and answer forums in a public meeting



WALTER P MOORE

Focus/Stakeholder Groups



WALTER P MOORE

Charrette



WALTER P MOORE

Walking Tours



WALTER P MOORE

Demonstration Projects



Photo: Team Better Block

WALTER P MOORE

Online Engagement

6. Please rank the importance to you of each of the following transportation investments. (Mark the most important as 1, the second most as 2 and so on.)

	1	2	3	4	5
Widen existing roadways	<input type="radio"/>	<input type="radio"/>	<input type="radio"/>	<input type="radio"/>	<input type="radio"/>
Repair and maintain existing roads	<input type="radio"/>	<input type="radio"/>	<input type="radio"/>	<input type="radio"/>	<input type="radio"/>
Build new roads	<input type="radio"/>	<input type="radio"/>	<input type="radio"/>	<input type="radio"/>	<input type="radio"/>
Improve/expand transit system	<input type="radio"/>	<input type="radio"/>	<input type="radio"/>	<input type="radio"/>	<input type="radio"/>
Improve/expand bicycle network and trails	<input type="radio"/>	<input type="radio"/>	<input type="radio"/>	<input type="radio"/>	<input type="radio"/>
Improve/expand sidewalks	<input type="radio"/>	<input type="radio"/>	<input type="radio"/>	<input type="radio"/>	<input type="radio"/>



WALTER P MOORE

Strategies to Involve the Public

→ Involve the public early on, especially on potential difficult projects



→ Promote two-way communications between staff/consultant and the public



WALTER P MOORE



THANK YOU!